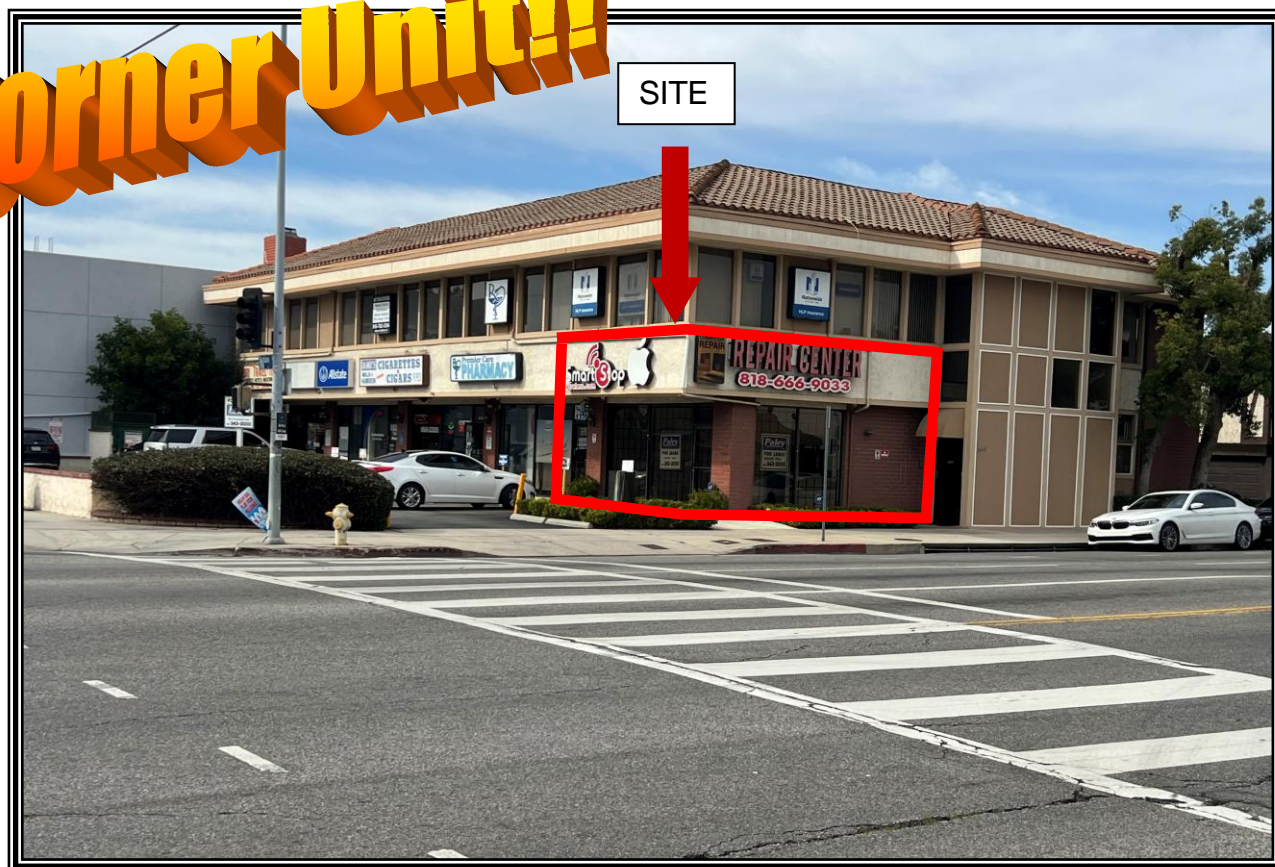


Corner Retail Unit for Lease
13701 BURBANK BOULEVARD

Corner Unit!!!



- LOCATION:** 13701 Burbank Boulevard
Van Nuys, Ca 91401 (NWC Burbank Blvd/Woodman Ave)
- SIZE/RENTAL RATE:** Unit 13701 – 750 +/- rentable square feet
@ \$2,900.00 per month, MG
- OCCUPANCY:** Immediate
- PARKING:** Available plus Free Street Parking
- COMMENTS:**
- * Easy access to nearby amenities
 - * Corner Unit on a busy signalized intersection
 - * Minute away from 101 Freeway and major boulevards
 - * A MUST SEE!!!

FOR MORE INFORMATION OR A TOUR, PLEASE CONTACT:

Richard L. Paley

richard@paleycommercial.com

DRE: 00966353

Howard Bass

howard@paleycommercial.com

DRE: 00940993

19507 Ventura Boulevard, Tarzana, Ca 91356 ~ Phone (818) 343-3000 ~ Fax (818) 343-3311
www.paleycommercial.com